

ALUMINIUM SHUTTER SYSTEM

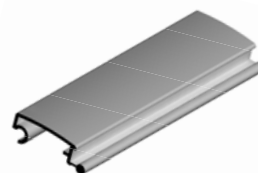
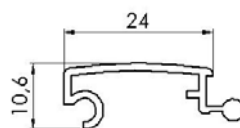
- This system is mainly aimed at side opening cabinets up to 2 metre high.
- The fitment of guide plugs and a special lubricant ensures a smooth action to the shutter movement.
- A full range of tracking is available to match the requirements of steel or wooden cabinets of various sizes.
- Other accessories can complement the system : various types of locks and handles.
- Finishes : Aluminium offers the opportunity to have various colours and textures in anodised or powdercoated finishes.

The Plastil Aluminium shutter system offers all the flexibility of the side opening PVC shutter systems with the added security of aluminium.



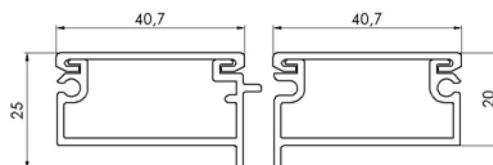
SHUTTER SYSTEM

| reference | description |
|-----------------------------|---------------------------------------|
| Shutter profile 2294 | aluminium smooth single slat 1 X 24mm |



Aluminium terminal + aluminium cover slat ref 2008/2009 + ref 2295

Our terminal can be supplied fully assembled ready to fit straight in your cabinet reducing your production time
Cover slat can be punched to specific shape and size requirements.



ACCESSORIES

Handles : recessed or surface mounted
Please contact us for specific requirements.

Locks : 1 point, 2 point, multi point

Track : see our leaflet to find the most suitable tracking system for your cabinet.

